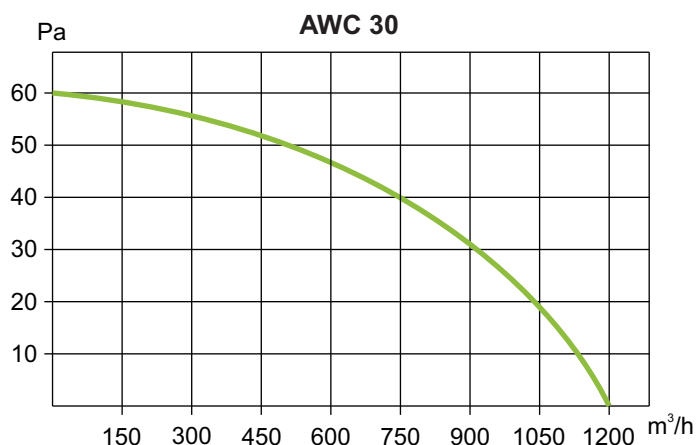
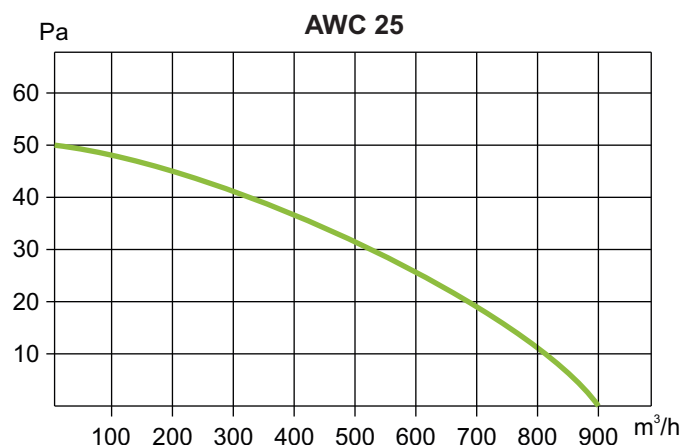
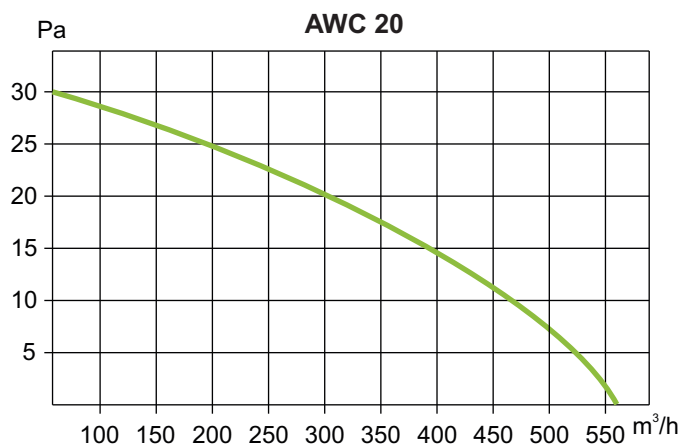
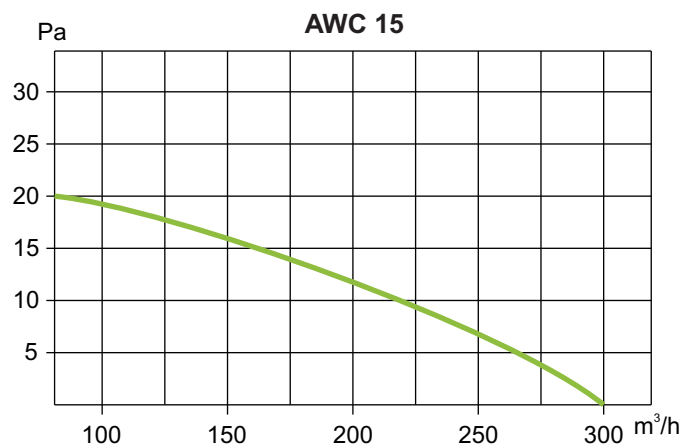




## Feature

- Low noise.
- Easy installation, service and clean.
- Waterproof motor.
- Be able to speed controllable.
- By louver and automatic shutter
- Compact design.
- Can be installed directly on the wall.
- Standard motor range is protected to IP44, class B insulation.

## Performance Curve



## General Information

The AWC series is a range of wall exhaust fans for bathroom, shopping malls, hotels, living room, office, store, laundries, toilet and general exhaust applications. Available in four size to suit small and large rooms.

## Construction Information

The casing is used brand new good quality resin material.

The fan is fitted with high efficiency axial impeller driven by long life motor with sealed for life bearing.

The motor is made of 100% copper coil and fitted with high quality ball bearing, high efficiency, low noise, maintenance free and long service life. Equipped with thermal overload protection.

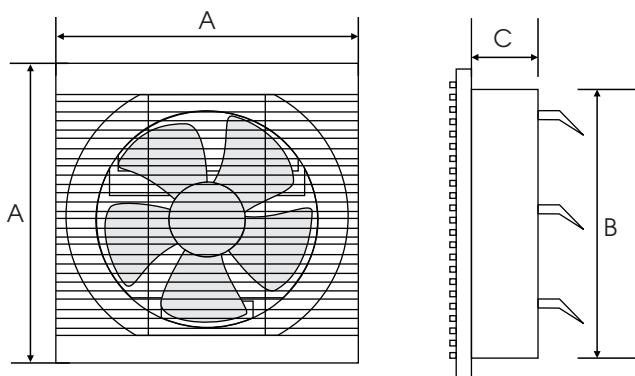
## Testing

The performance has been tested in accordance with ISO 5801. The sound data has been determined by testing to ISO 13347-2. The fans have passed QCVN 04:2009/BKHCN (IEC 60335) standard for electric safety.

## Performance Parameters

Model	Max. Air Volume (m³/h)	Power (W)	Speed (rpm/min)	Voltage (V/P/Hz)	Noise dBA (at 3m)	Installation (mm)	Weight (Kg)
<b>AWC 15</b>	300	25	1390	220/1/50	35	205x205	2.0
<b>AWC 20</b>	560	30	1300	220/1/50	39	255x255	3.0
<b>AWC 25</b>	900	35	1200	220/1/50	45	305x305	4.0
<b>AWC 30</b>	1200	45	1000	220/1/50	49	355x355	4.5

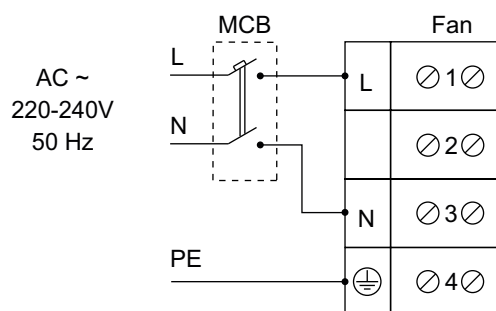
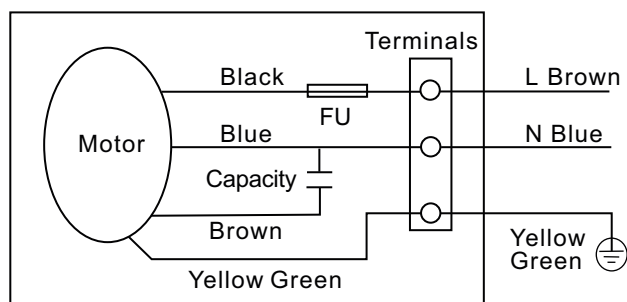
## Dimension Information



Model	A	B	C
<b>AWC 15</b>	245	200	150
<b>AWC 20</b>	295	250	150
<b>AWC 25</b>	345	300	150
<b>AWC 30</b>	400	350	150

All dimensions in mm.

## Wiring Diagram



## Installation Method

- Take care of direction of air flow shown by arrow stickers.
- Make a frame and install it to the wall. The sizes of frame and hole refer to the above dimension sheet.
- Install the fan with screws to the frame (refer to the right picture).

