



## General Information

AWF series are offered reliable performance in industrial exhaust wall fan application suitable for factory and warehouse, livestock farms, agricultural flower greenhouses, industrial plants, such as ventilation, cooling and ventilation.

## Construction Information

**Frame:** High quality thick galvanized plate 1.2mm and zinc 275g/m<sup>2</sup>, high strength, strong corrosion resistance.

**Impeller:** 304 of 6-blade stainless steel is beautiful and durable, through dynamic balance test, large volume and low noise, no deformation and no fracture.

They have thickness with 1.2 mm and a self-cleaning stainless steel material made by stamping, no dust, beautiful and durable. The special shape of the blade design ensures large volume, no deformation, not broken.

**Motor:** High quality (TEFC). The voltage and frequency can be customized. Standard range is IP 55, insulation class F.

**Bearing:** High quality Japan ball bearing with special waterproof design, water can't enter, high strength, low noise, maintenance free and long service life.

**Pulley:** High strength aluminum magnesium alloy hot molding, light weight and high strength.

**Belt:** High quality Japan belt such as Mitsuboshi, etc.

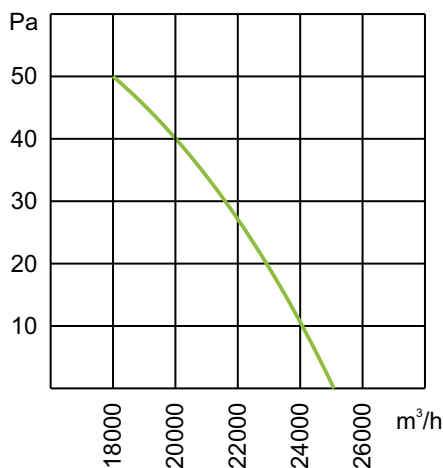
**Weight:** Using high strength nylon swing open shutter opening and closing device, flexible and stable.

### Tensioning mechanism:

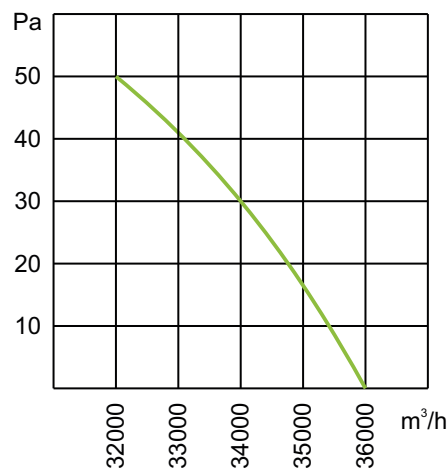
The automatic belt tensioner to ensure efficiency and good performance of the most advanced.

## Performance Curve

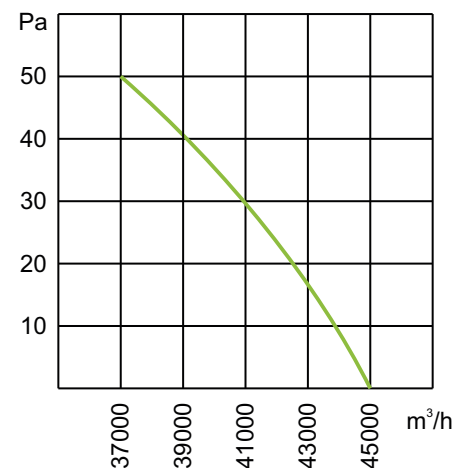
**AWF 750**



**AWF 1100**



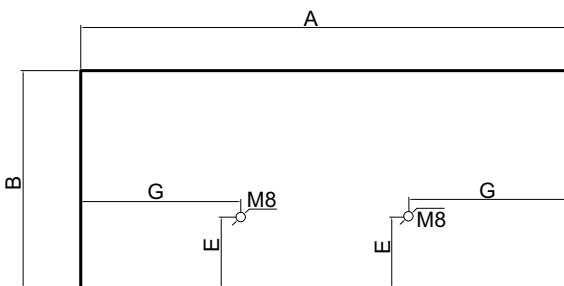
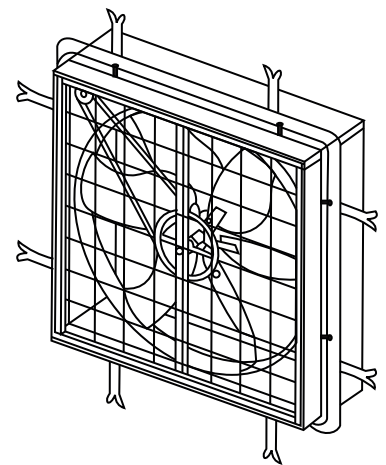
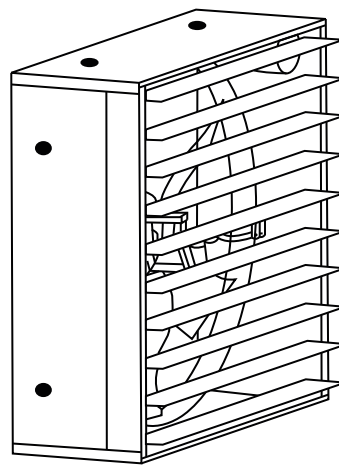
**AWF 1250**



## Performance Parameters

Model	Max. Air Volume (m <sup>3</sup> /h)	Power (kW)	RPM Fan	RPM Motor	Voltage (V/P/Hz)	Dimension (mm)	Weight (Kg)	Noise dBA (at 3m)
<b>AWF 750</b>	25000	0.55	650	1440	380/3/50	900x900x400	66	65
<b>AWF 1100</b>	36000	0.75	560	1440	380/3/50	1220x1220x400	85	68
<b>AWF 1250</b>	45000	1.1	440	1440	380/3/50	1380x1380x400	96	72

## Dimension Information



Model	A	B	C	D	E	F	G
<b>AWF 750</b>	900	400	450	100	130	300	295
<b>AWF 1100</b>	1220	400	610	100	130	280	260
<b>AWF 1250</b>	1380	400	690	100	130	210	220

All dimensions in mm.

