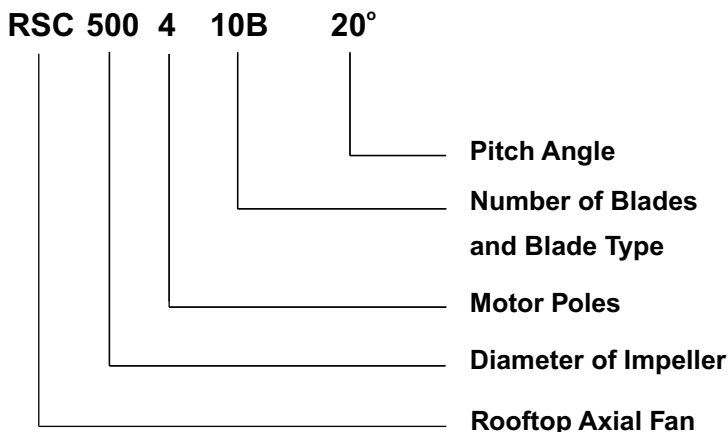


## Fan Code



## Casing

Fan sizes are from 315mm to 1600mm diameter.

The performance range is from 500 m³/h up to 195.000 m³/h, pressure up to 1.500 Pa.

All casings and motor mounting are made of mild steel, all steel parts are epoxy coated after manufacturing, thickness from 2.0mm to 6.0mm upon diameter.

Roof cowl is made of aluminum or mild steel with epoxy coated or stainless steel upon requested.

Roof base support and protection guard are epoxy coated.

### Applications:

Designed for roof installation, and suitable for:

General ventilation in factory and warehouse, buildings, shops and industry.

- Roof ventilation (Aluminum roof).
- Smoke extraction vertical discharge.

Temperature time classification according EN 12101-3 class H250 or H300/2hours.

## Impeller Data

High efficiency aluminum aerofoil type. All units are fitted with Breezax Impellers with Aluminum (ALU) blades. GRP or GRN blades can be fitted if required.

Hubs are manufactured from fully die cast aluminum alloy as standard.

The blades are with adjustable pitch angle to optimize the dutypoint. The solidity varies for a wider range of performance.

## Operating temperature:

- ALU: -40°C + 200°C
- GRP: -40°C + 70°C
- GRN: -40°C + 150°C
- AST: -30°C + 110°C

## Balance:

The impellers are statically and dynamically balanced on precision machines according to ISO 1940 with G2.5mm/s quality standard.

## Motor Data

Motors incorporated are TEFC (Total Enclosed Fan Cooled) and airstream rated to IEC 34-1.

Standard motors are protected to IP55 with Class F insulation. Operating temperature is from -20°C to +50°C as standard, fans for operation beyond these limits are also available.

Motors are suitable for speed control by frequency inverter, subject to fan selection.

Available specific for your project requirements such as:

- 220-240V / 380-415V-50Hz.
- 60Hz: specific to your voltage requirements.
- 2-speed (Full/Half and Full/Two Thirds).
- High temperature motor and double speeds motor (Class H): 250°C/2hrs or 300°C/2hrs or requested.
- Comply with ATEX or IECEx certified motor. Enclosure IP55 or IP66, class F insulation. Fitted with sealed for life ball bearings.

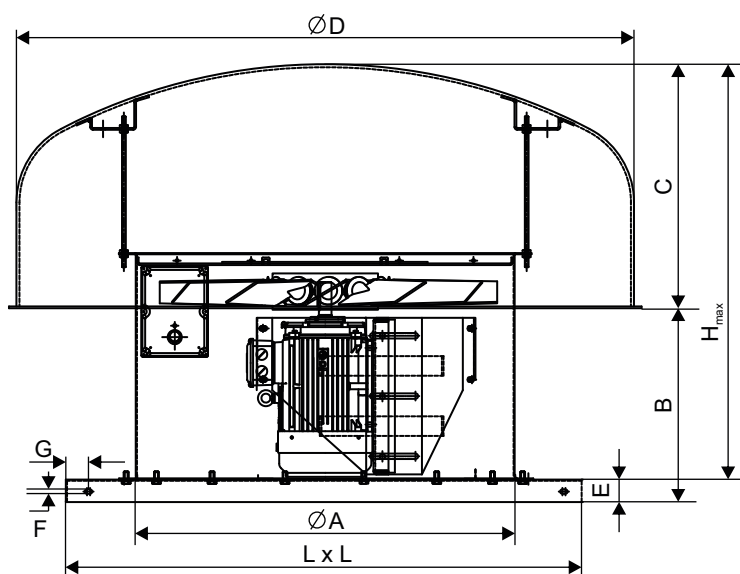
## Performance Data

Full details are available on our selection program: Breeze Fan or London Fan.

- Manufactured under a certified ISO 9001:2015.
- The performance is tested international standards by BS 848-1:1985 and ISO 5801.

Please contact our sale department or login <http://www.breeze.com.vn> for selection program.

## Dimension Information



All dimensions in mm.

Model	ØA	B	C	ØD	E	F	G	LxL	H <sub>max</sub>
<b>RSC 315</b>	315	200	240	750	35	8	50	500x500	550
<b>RSC 355</b>	355	200	240	750	35	8	50	550x550	550
<b>RSC 400</b>	400	200	300	850	40	8	50	600x600	650
<b>RSC 450</b>	450	200	300	850	40	8	50	660x660	720
<b>RSC 500</b>	500	236	300	850	40	12	50	730x730	760
<b>RSC 560</b>	560	236	400	950	50	12	60	810x810	760
<b>RSC 630</b>	630	236	400	1000	50	12	60	900x900	810
<b>RSC 710</b>	710	300	400	1200	50	12	60	990x990	1000
<b>RSC 800</b>	800	315	450	1400	60	12	70	1100x1100	1100
<b>RSC 900</b>	900	355	450	1600	60	14	70	1200x1200	1200
<b>RSC 1000</b>	1000	400	645	1600	60	14	70	1300x1300	1300
<b>RSC 1120</b>	1120	600	645	1800	75	14	70	1500x1500	1500
<b>RSC 1250</b>	1250	600	850	2000	75	14	75	1710x1710	1600
<b>RSC 1400</b>	1400	600	850	2400	75	14	75	1900x1900	1750
<b>RSC 1600</b>	1600	650	1000	3000	100	20	80	2160x2160	1850

Dimensions shown are approximate only. The details please contact local sales office for more information.